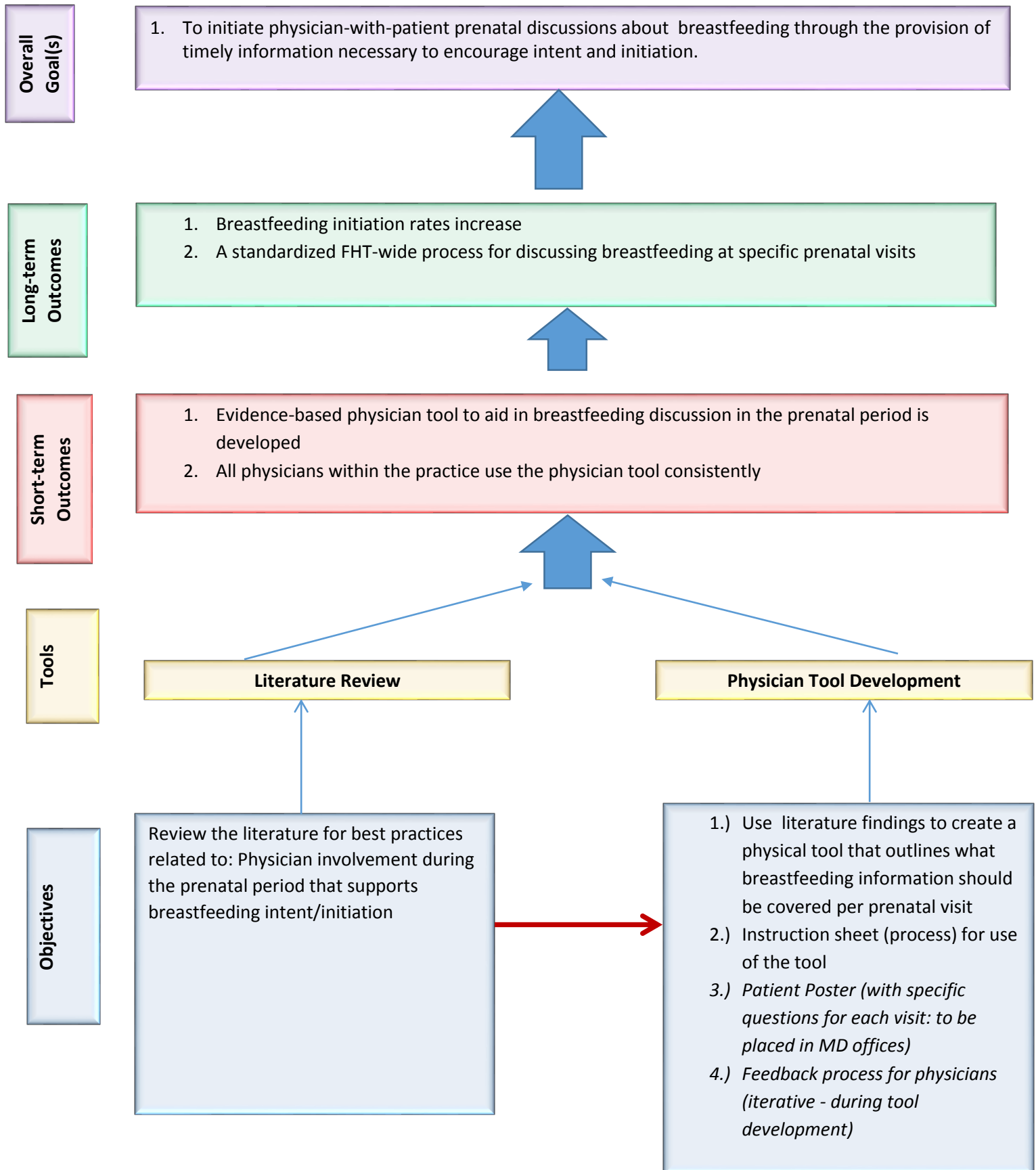


## QSFHT Best Start for Baby Breastfeeding Project Framework: Physician Tool

**Project Scope:** To develop an evidence-based, standardized physician tool that supports scheduled, prenatal discussions about breastfeeding through the provision of timely information necessary to encourage intent and initiation.

NB: the relationship between each component is not necessarily linear and may be more symbiotic



## Tool Specific Research Plan(s)

### Literature Review

**Research Question: When and what** information (or what questions) should physicians be sharing with (asking) their expecting patients about breastfeeding?

Literature Review: Physician Tool in Primary Care		
Objectives	Search Terms	Search Results
Determine the <b>types</b> of <b>questions</b> or the <b>information</b> that physician should be asking/sharing in the prenatal period with regards to breastfeeding	"Breastfeeding" and "Service" OR "Program" OR "Project" OR "Intervention" OR "Office" AND "Primary Care" OR "Family Practice" OR "Physician" OR "Doctor" OR "Prenatal" OR "Care" AND "Questions" OR "Information" OR "Key Points"	
Determine <b>when</b> physicians should be asking specific questions about breastfeeding and when specific information should be	"Breastfeeding" and "Service" OR "Program" OR "Project" OR "Intervention" OR "Office" AND "Primary Care" OR "Family Practice" OR "Physician" OR "Doctor" OR "Prenatal" OR "Care" AND "Questions" OR "Information" OR "Key Points" AND "Timing" OR "Gestation" OR "Weeks" or "Cues to action" OR "Prompts"	
Determine the indicators of successful breastfeeding services (information & timing of information) provided by physicians in primary care	"Breastfeeding" and "Services" OR "Program" or "Project" and "Primary Care" OR "Family Practice" OR "interdisciplinary collaboration" OR "interdisciplinary team" AND "indicators"	

	or “evaluation” or “measure” or “outcome” and “Physician” or “doctor”	
--	--	--

Physician Tool in Primary Care Development		
Objectives		Output
Streamline the care that is being provided to patients at QSFHT about breastfeeding, so that initiation increases	-Ensure that the same information is being shared with all patients at the same time, so that everyone is receiving the best possible care	Literature Review
Create an easy to use tool that clearly outlines what information should be shared with patients and when it should be shared	-Base the tool on the evidence found in the literature and ensure it is easy to use	-Ring with cards & instruction sheet

Task	Approx. Timeline
Outline the project framework for physician tool	3 hours
Objectives for literature review -Search terms -Search strategy -Inclusion/exclusion criteria	3 hours
Scoping literature review -Selecting Articles -Charting literature review results	60 hours
Formal write up of recommendations for the physician tool	15 hours
Create Physician Tool based on the literature	15 hours
Feedback and make changes	10 Hours