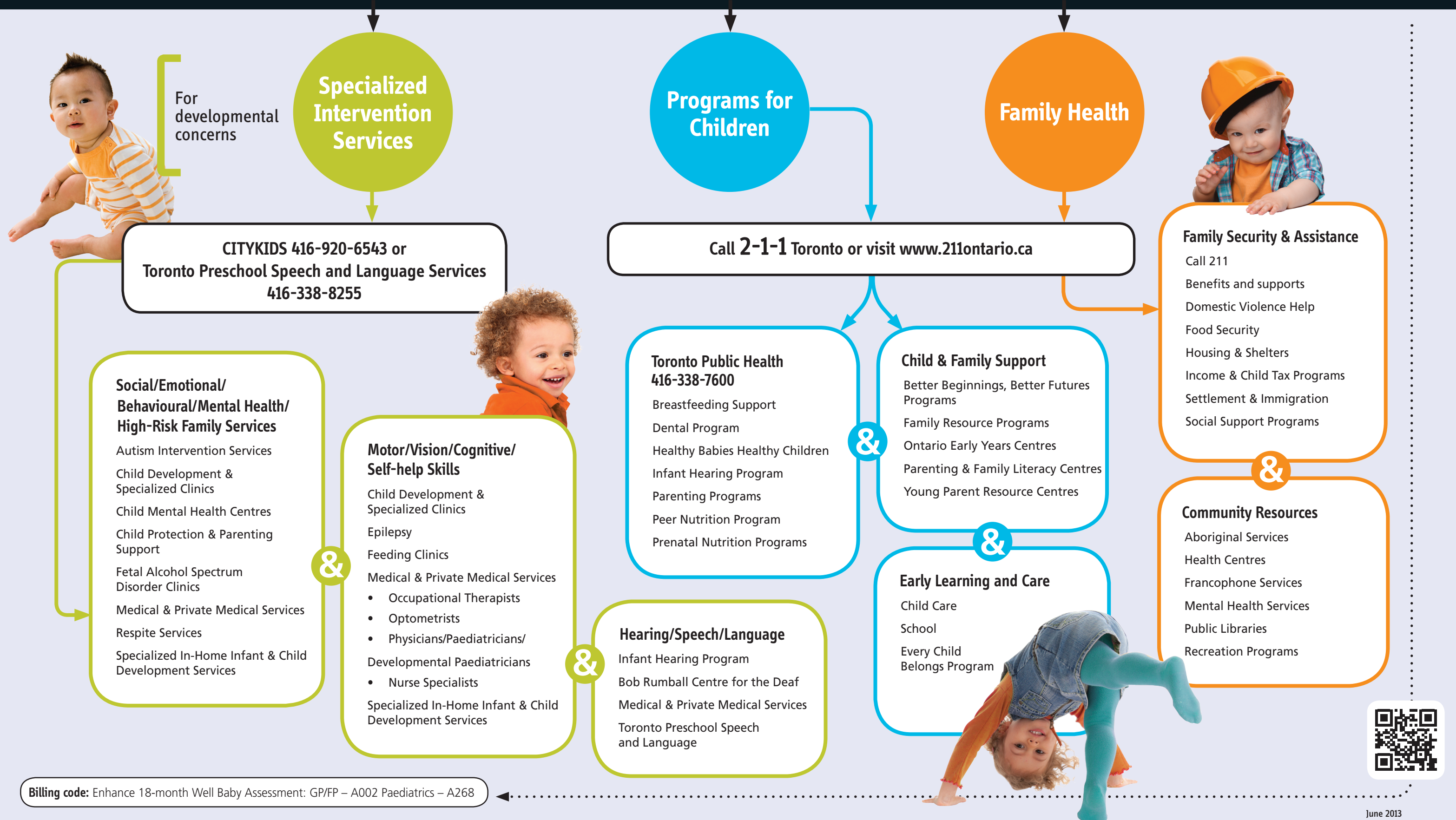


Parent Concern, Health Visit, Screening Clinic, Professional Observation

[Nippissing District Developmental Screen, Rourke Baby Record, Communication Checklist, Hearing Vision Test, mCHAT, Ages and Stages SE, Nutristep, Physician Poverty Tool]



Billing code: Enhance 18-month Well Baby Assessment: GP/FP – A002 Paediatrics – A268





Specialized Intervention Services

CITYKIDS (Citywide)

CITYKIDS is a network of agencies offering single point access, coordinated intake and service delivery to children with special needs and their families. Serves children ages 0–6, and 6–12 attending childcare. | Tel: 416-920-6543 Fax: 416-920-1543 | www.mothercraft.ca

Autism Intervention Services

Geneva Centre for Autism
Clinical Intervention and Training.
Tel: 416-322-7877 | www.autism.net

Surrey Place Centre
Toronto Partnership for Autism Services
Intensive Behavioural Intervention (IBI)
For children with a confirmed diagnosis of Autistic Disorder or fall toward the severe end of the autism spectrum.
Tel: 416-925-5141 x 2289 | www.surreyplace.on.ca

Toronto Autism Applied Behaviour Analysis (ABA) Services
For children and youth ages 0–18 with a confirmed Autism Spectrum diagnosis including Autism/Autistic disorder, PDD-NOS and Asperger's Disorder.
Tel: 416-925-5141 x 2231 | www.surreyplace.on.ca

Child Development & Specialized Clinics

Developmental assessments, neurological assessments and/or psychological assessments. Physician referral required. Children must be between the ages of 0 and 6 years of age and must reside within Toronto.

North York General Hospital (North)
Tel: 416-632-8724 | Fax: 416-632-8704
www.nygh.on.ca

Regent Park Community Health Centre
Tel: 416-362-0805 x 228 | Fax: 416-362-5899
www.regentparkchc.org

St. Joseph's Health Centre: Paediatric Consult Clinic (South/West)

For child under 3 years 11 months with delays in 2 or more domains with a query of autism.
Tel: 416-530-6000 x 4449 | Fax: 416-530-6294
www.stjoe.on.ca

St. Michael's Hospital: Pediatric Ambulatory Clinic (Downtown core)

Tel: 416-864-6060 x 8276

St. Michael's Hospital: FASD Diagnostic Clinic (Citywide): Pediatric Outpatient Clinic
Tel: 416-867-3655 | Fax: 416-867-3736
www.stmichaelshospital.com

The Scarborough Hospital (East)
Tel: 416-431-4848 | Fax: 416-431-5940 | www.tsh.to

Toronto East General Hospital – Child Development Clinic (South East)
Tel: 416-469-6580 x.6308 | Fax: 416-469-6503
www.tegh.on.ca

Holland Bloorview Kids Rehabilitation Hospital
Interdisciplinary assessments, diagnosis, and referrals to community services. All referrals to satellites for child development services are coordinated through the Holland Bloorview main site Intake. Tel: 416-425-6220 x 3334 Fax: 416-422-7036

Satellite locations:
Eglinton West (Serving North & West)
Toronto East General Hospital (South & East York)
www.hollandbloorview.ca

Children's Mental Health Services

Assessment and programs for children, youth and their families with social / emotional concerns. Age limit varies, please contact for further details.

Adventure Place (North)
Tel: 416-744-7650 x228 | www.adventureplace.ca

Aisling Discoveries Child and Family Centre (East)
Tel: 416-321-5464 | www.aislingdiscoveries.on.ca

Family Resource Programs | www.fsio.ca

Ontario Early Years Centres
Tel: 1-866-821-7770 | TTY 1-800-387-5559
www.ontarioearlyyears.ca

Parenting and Family Literacy Centres
Tel: 416-394-2067
www.edu.gov.on.ca/eng/parents/pflc.html

Toronto Military Family Resource Centre
Tel: 416-633-6200 | www.familyforce.ca

Toronto Public Library
Tel: 416-393-7131 | TTY: 416-393-7030
www.torontopubliclibrary.ca

Child Care

Child care, specialized nurseries, centre-based and home-based programs.
Tel: 3-1-1 | www.toronto.ca/children/childcare

Childcare Subsidy – City of Toronto
Tel: 3-1-1 | www.toronto.ca/children/subsidy.htm

Centre for Addiction & Mental Health (Citywide)
Tel: 416-535-8501 x 4366 | www.camh.net

Child Development Institute (South + East York)
Tel: 416-603-1827 | www.childdevelop.ca

Etobicoke Children's Centre (West)
Tel: 416-240-1111 | www.etobicokechildren.com

George Hull Centre (West)
Tel: 416-622-8833 x 258 | www.georgehullcentre.on.ca

Hincks-Dellcrest Centre (North + South)
Tel: 416-924-1164 | www.hincksdellcrest.org

North York General – Child & Adolescent Team
Tel: 416-632-8703 | www.nygh.on.ca

Sick Kids Infant Psychiatry Program (Citywide)
Tel: 416-813-6582 | www.sickkids.on.ca

Yorktown Child and Family Centre (Northwest)
Tel: 416-394-2424
www.yorktownfamilyservices.com

Child Protection and Parenting Support

Investigates allegations of child abuse and neglect. Provides guidance, care, prevention and adoption services.

Children's Aid Society of Toronto
Tel: 416-924-4646 | www.torontocas.ca

Catholic Children's Aid Society
Tel: 416-395-1500 | www.torontocas.org

Jewish Family and Child Service of Toronto
Tel: 416-638-7800 | www.jfandcs.com

Native Child and Family Services of Toronto
Tel: 416-969-8510 | www.nativechild.org

Epilepsy

Epilepsy Toronto
Serves children who have epilepsy/seizure disorder and their families by providing parent support, counseling, education and advocacy.
Tel: 416-964-9095 | www.epilepsytoronto.org

Every Child Belongs Program

Provides enhanced services to children, their families, staff, and providers in licensed child care programs.
Tel: 3-1-1 | www.toronto.ca/children/specialneeds

Schools

Conseil scolaire de district catholique Centre-Sud
Tel: 416-397-6564 | www.csdccs.edu.on.ca

Conseil scolaire Viamonde Sud-Ouest:
Tel: 416-614-0844 | www.csviamonde.ca

Toronto District School Board
Tel: 416-397-3000 | www.tdsb.on.ca

Toronto Catholic District School Board
Tel: 416-222-8282 x 5314 | www.tcdsb.org

Toronto Public Health

(Citywide)
Programs for parents and children prenatal to 6 years. Includes: Breastfeeding Support, Dental, Healthy Babies Healthy Children, Parenting Programs, Peer Nutrition Program, Preschool, Speech & Language Services, Blind/Low Vision, Infant Hearing Program | Tel: 416-338-7600 TTY: 416-392-0658 | www.toronto.ca/health

Feeding Clinics

(Citywide)
Assesses and manages children who have feeding and swallowing issues.

Holland Bloorview Kids Rehabilitation Hospital
Tel: 416-424-3835 | www.hollandbloorview.ca

North York General Hospital: feeding Clinic and Nutrition Services
Tel: 416-756-6222 | www.nygh.on.ca

Sick Kids Hospital
Tel: 416-813- 7270 | www.sickkids.on.ca

Hearing/Speech/Language

Infant Hearing Program
Serves children birth to 6 years of age. Provides universal newborn hearing screening, high risk monitoring, audiology assessments, communication development, and family support.
www.children.gov.on.ca

Toronto Preschool Speech and Language Services

Serves children birth to 5 years of age. Assessments, consultations, parenting support, therapy and referrals.
Tel: 416-338-8255 | TTY: 416-338-0025
www.tpsls.on.ca

Bob Rumball Centre for the Deaf
Community centre and provider of services to the Deaf community. | Tel: 416-449-9651
TTY: 416-449-2728 | www.bobrumball.org

Medical and Private Services

(Citywide)
Community Health Centres
Physicians, professionals and prevention programs | Tel: 1-866-532-3161
TTY: 1-800-387-5559
www.health.gov.on.ca/en/common/system/services/chc/

Toronto Public Health: Peer Nutrition

Tel: 416-338-8395
www.toronto.ca/health/peernutrition

Young Parent Resource Centres

Care & treatment services for young parents & their children.

Humewood House Association
Tel: 416-651-5657 | www.humewoodhouse.com

June Callwood Centre for Women and Families
Tel: 416-365-1888 | www.junecallwoodcentre.org

Massey Centre
Tel: 416-425-6348 | www.massey.ca

Rosalie Hall
Tel: 416-438-6880 | www.rosaliehall.com

Community Action Program for Children (CAPC)

(Citywide)
Families with young children birth to 6 years living in conditions which may impact on their ability to reach optimal health. | www.realhelp.ca

Occupational Therapists
Tel: 416-214-1177 | www.coto.org

Optometrists
Tel: 1-800-540-3837 | www.eyecareoao.com

Physicians/Paediatricians/Specialists
Tel: 416-967-2603 | www.cpsp.on.ca

Canadian Association of Speech and Language Pathologists and Audiologists | www.aslpa.ca

Ontario Association of Speech-Language Pathologists | Tel: 416-920-3676 | www.osla.on.ca

Respite Services

Safehaven project of Community Living
Residential Services for children ages 0–18 years with multiple disabilities and complex medical care needs. | Tel: 416-535-8525 | www.safehaven.to

Community Living Toronto
Lawson: (Ellesmere and McCowan) Residential services for children ages 2–21 with an intellectual disability. Overnights available.

Ennerdale: (Eglinton and Dufferin) Residential services for children ages 2–18 with Autism Spectrum Disorder. Overnights available but not required. | Tel: 647-426-3219 | www.cltoronto.ca

Geneva Centre for Autism
Evening Respite Groups:
Serves children ages 2-18 with Autism Spectrum Disorder on a 1 staff 2 child ratio. Operates April-June 3:30-8:30pm.

Weekend Respite and Zone Summer Camps:
Serves children ages 6-18 with Autism Spectrum Disorder | Tel: 416 322-7877 x325 | www.autism.net

Family Health

Aboriginal Services

Native Child and Family Services of Toronto
Tel: 416-969-8510 | www.nativechild.org/

Benefits and Supports

Benefits Canada
Tel: 1-800-622-6232 | www.canadabenefits.gc.ca

Domestic Violence Help

Assaulted Women's helpline
Free, anonymous, confidential 24/7 crisis counselling, safety planning, emotional support, information and referrals.
Tel: 1-866-863-0511 | TTY: 1-866-863-7868
Mobile: #SAFE | www.awhl.org

Food Security and Nutrition

(Citywide)
Breakfast Club
Tel: 905-474-8054 | www.breakfastclubs.ca

Foodlink Hotline
Connections to over 1300 local food programs.
Tel: 416-392-6655
www.foodshare.net/foodlink-hotline

Francophone Services

Centre Francophone
Tel: 416-203-1220 x 250 | www.centrefranco.org

Holland Bloorview Kids Rehabilitation Hospital
Inpatient/Overnight Residential Respite: Short-term, inpatient care for children ages 0–19 with disabilities or complex medical needs.
Day Respite services: Serves children with a complex physical disability and/or developmental delay. Priority for medically fragile, or children with a secondary diagnosis of Autism Spectrum Disorder. | Tel: 416-425-6220
www.hollandbloorview.ca

Respite Services Toronto
Serves children with a developmental and/or physical disability. | Tel: 416 322 6317 x1
www.respiteservices.com/Toronto

Specialized In-Home Infant & Child Developmental Services

(Citywide)
Centennial Infant and Child Centre
Serves children ages 0–5 with suspected or diagnosed developmental delays in 2+ or more areas. | Tel: 416-935-0200 x246 | www.cicc.ca

Centre Francophone de Toronto
Serves children ages 0–5 who are identified or at risk of a developmental delay and want services in French. | Tel: 416-922-2672 | www.centrefranco.org

Community Care Access Centre (CCAC)
Serves children ages 0–2, or walking. Offers Occupational Therapy, Physiotherapy, Social worker and Service Coordination
Tel: 416-506-9888 | www.toronto.ccac-ont.ca

Community Living Toronto
Serves children and youth with developmental disabilities and their families.
Tel: 647-426-3219 | www.cltoronto.ca

Health Services

Community Health Centres
Tel: 1-866-532-3161 | TTY: 1-800-387-5559 health.
www.gov.on.ca/english/public/contact/chc/chc_mn.html

Dental Services
Free dental services for children 0-17, adults enrolled in TPH programs, seniors 65+.
Tel: 3-1-1 | www.toronto.ca/health/dental/locations.htm

Vision Institute
Tel: 416-224-2273 | www.visioninstitute.optometry.net

Housing and Shelters

Emergency Shelters
Tel: 1-877-338-3398 | www.toronto.ca/housing

Toronto Community Housing Corporation
Tel: 416-981-5500 | www.torontohousing.ca

Income & Child Tax Programs

Canada Revenue Agency
Tel: 1-800-387-1193
www.cra-arc.gc.ca/bnfts/menu-eng.html

Legal Support

Legal Aid Ontario
Tel: 416-979-1446 | Toll-free: 1-800-668-8258
www.legalaid.on.ca

Holland Bloorview Kids Rehabilitation Hospital
Serves children ages 0–5 with all diagnoses: physical, at risk, pre-term or neurological.
Tel: 416-782-1105 | www.hollandbloorview.ca

Mothercraft Parent Infant Program
Serves children ages 0–6 who are at risk due to biological and psychosocial issues.
Tel: 416-364-7373 | www.mothercraft.ca

Surrey Place Centre
Serves children ages 0–5 suspected or diagnosed with developmental disability.
Tel: 416-925-5141 | www.surreyplace.on.ca

Ontario Foundation for Visually Impaired Children
Serves children ages 0–5 with a diagnosis of visual impairment with or without additional disabilities. | Tel: 416-925-5141 | www.ofvic.org

Woodgreen Community Services: Parent Outreach Program
In-home support for parents of children with developmental delays ages 2.5–21.
Tel: 416-645-6000 x1163 | www.woodgreen.com

Vision

(Citywide)
Blind Low Vision Program:
Children with 20/70 vision acuity in the better eye after correction, Visual field restriction to 20 degrees or less, a physical condition of the visual system that cannot be corrected medically.
Tel: 416-338-8255 | TTY: 416-338-0025
www.tpsls.on.ca

Mental Health Services

Centre for Addiction and Mental Health
Tel: 416-595-6059 | www.camh.net

Family Service Toronto
Provides counselling, support for individuals, couples and families, and support groups
Tel: 416-595-9230 | www.familyservicetoronto.org

Mental Health Helpline
Free information about mental health services. Available 24/7 in more than 140 languages.
Tel: 1-866-531-2600 | www.mhsio.on.ca

Public Libraries

Toronto Public Library
Tel: 416-393-7131 | TTY: 416-393-7030
www.torontopubliclibrary.ca

Recreation Centres

Park, Forestry and Recreation
Tel: 3-1-1 | www.toronto.ca/parks/

Settlement or Immigration Supports

OCASI-Settlement
Provides newcomers with information and resources to settle in Ontario, Canada
Tel: 416-322-4950 | www.settlement.org

Social Support Programs

Ontario Disability Support Program
Tel: 416-327-4954 | Toll free: 1-866-340-8881
www.mcsc.gov.on.ca/en/mcss/programs/social/odsp

Programs for Children

211 Toronto

Free information and referrals to community, health, social services and ethno-specific organizations. Confidential and client-focused services. Available 24/7 in more than 150 languages.
Tel: 2-1-1 | www.211Ontario.ca

Better Beginnings, Better Futures Programs

Serves families with children birth to 6 who live in the neighbourhood and surrounding areas and face barriers to accessing services

Parents For Better Beginnings (Regent Park)
Tel: 416-362-0805 | www.regentparkchc.org

Highfield Community Enrichment Project
Tel: 416-394-4635 | www.georgehullcentre.on.ca/highfield-community-enrichment-project

Child and Family Support (Citywide)

City wide Early Learning Programs for children up to six years of age and their parents/caregivers.