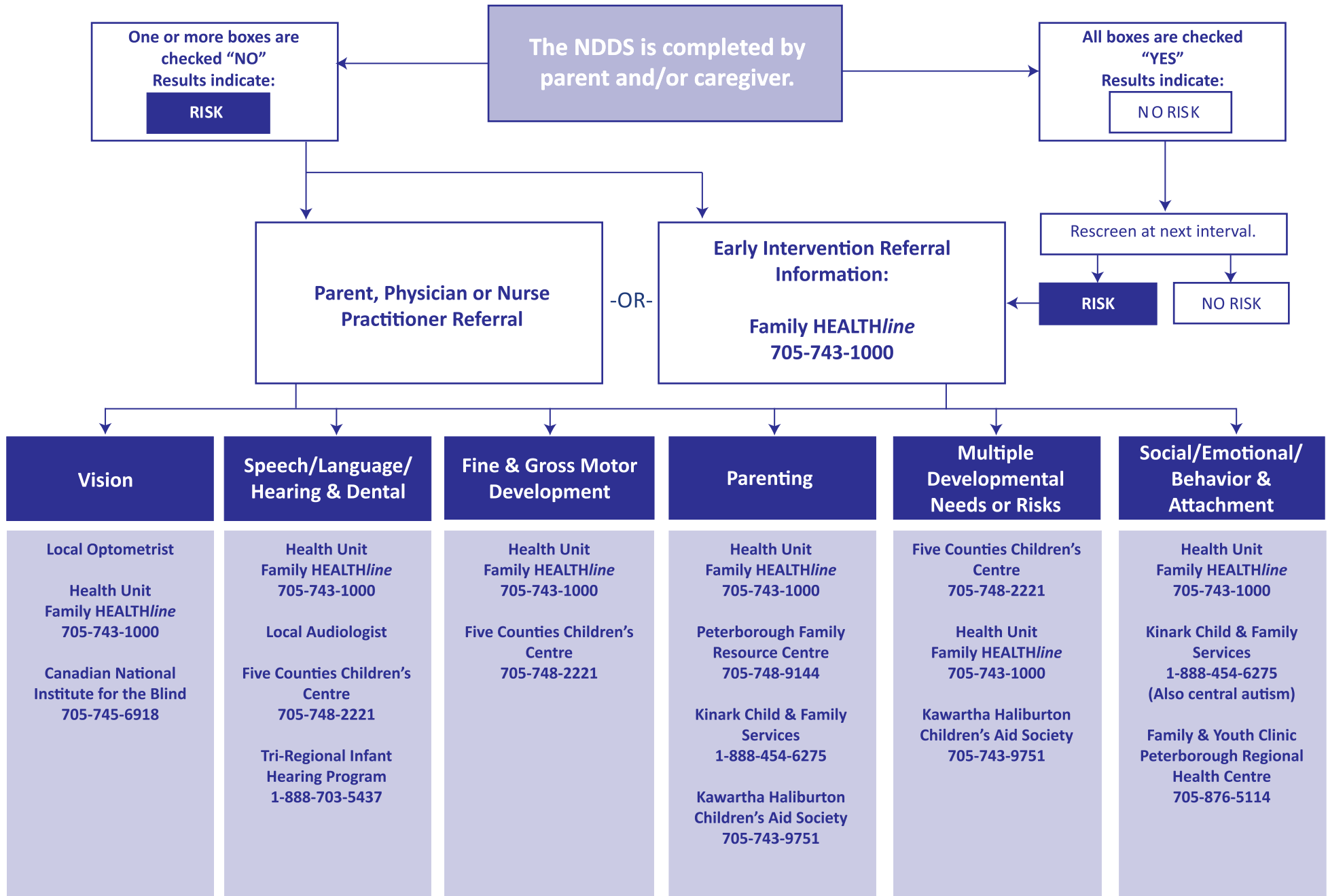


Nipissing District Developmental Screen (NDDS) Referral Flow Chart



Red Flags: A Quick Reference Guide for Early Years Professionals in Peterborough at www.pcchu.ca/redflags

On Track: A Reference Guide for Professionals in Ontario at www.beststart.org/OnTrack_English

May 2014

Agency/Service	Contact	Description of Free Services for parents & professionals
<p>Peterborough County-City Health Unit prenatal - 19 years:</p> <ul style="list-style-type: none"> • ITDP (Infant Toddler Development Program) • HBHC (Healthy Babies Healthy Children) • Dental Services <ul style="list-style-type: none"> • CINOT (Children In Need Of Treatment) • Healthy Smiles Ontario 	<p>Phone: 705-743-1000 Fax: 705-743-2897 www.pcchu.ca www.kidtalk.on.ca</p>	<ul style="list-style-type: none"> • Family HEALTHline • speech and language screening • cognitive, physical, social, emotional development information and screening • dental services for eligible families • healthy eating and child safety information • home visiting programs - HBHC, ITDP • parenting programs • order free Nipissing Developmental Screens
<p>Five Counties Children's Centre birth - 19 years:</p>	<p>Phone: 705-748-2221 Fax: 705-748-3526 www.fivecounties.on.ca www.kidtalk.on.ca</p>	<ul style="list-style-type: none"> • speech and language assessment and therapy • gross motor skills; feeding, sensory, fine motor skills assessment and therapy • infant hearing screening • family and child care supports • paediatric assessment
<p>Kinark Child & Family Services birth - 18 years:</p>	<p>Phone: 705-742-3803 Central Intake: 1-888-454-6275 Fax: 705-743-4144 www.kinark.on.ca</p>	<ul style="list-style-type: none"> • behavioural, emotional and social assessment • family and individual counselling • parenting programs • preschool and school age autism programs • in-home intensive care • day treatment • residential care
<p>Peterborough Family Resource Centre (Ontario Early Years Centre) prenatal - 12 years:</p>	<p>Phone: 705-748-9144 Fax: 705-748-9177 www.pfrc.ca</p>	<ul style="list-style-type: none"> • parenting programs • social development opportunities • parent/child programs • programs for families at risk by referral • child care information • Well Baby and Breastfeeding Clinic
<p>City of Peterborough, Social Services Department Community Partnership & Family Services Division, Children's Services Program birth - 12 years:</p>	<p>Phone: 705-748-8830, ext. 3616 Fax: 705-748-8858 www.city.peterborough.on.ca</p>	<ul style="list-style-type: none"> • financial assistance day care services • Ontario Works information • LEAP (Learning Earning and Parenting) program • community placements • social and special needs services • confirmation of crisis referral for child care assistance

Red Flags: A Quick Reference Guide for Early Years Professionals at www.pcchu.ca/redflags

On Track: A Reference Guide for Professionals in Ontario at www.beststart.org/OnTrack_English

Please provide feedback to Peterborough County-City Health Unit, Leisa Baker, lbaker@pcchu.ca

May 2014