

Halton's Developmental Pathways

Services for Young Children in Halton Region

18-MONTH WELL-BABY VISIT

Health Care Provider completes **Rourke Baby Record (RBR-ON)** informed by parent-completed **Nipissing District Developmental Screen (NDDS)TM**

No Developmental Concern
No developmental concerns on the NDDSTM or RBR-ON

24-Month Repeat Surveillance

ONTARIO EARLY YEARS (OEYC)/ OTHER PARENTING/COMMUNITY PROGRAMS

- Halton Region
- Halton Our Kids Network
Resources for professionals and families
- Ontario Early Years Centres in Halton

Above services include:

- Child Care
- Nutrition
- Recreation
- Safety
- Mental Health
- Behaviour
- Literacy
- Social Supports
- Parent/Child Attachment
- Cultural Services
- Early Child Development
- Early Learning Programs (including Drop Ins)
- Common Parenting Concerns
- Parent Programs

Developmental Concern
1 or more no's on the NDDSTM or other developmental concern on the RBR-ON

RBR determines areas of concern

AREA OF DEVELOPMENTAL CONCERN	PROGRAMS AND SERVICES IN THE HALTON COMMUNITY
Social/Emotional/Behavioural	<ul style="list-style-type: none"> • Halton Region • ROCK (Reach Out Centre for Kids) Assessment & Diagnosis
Parenting	<ul style="list-style-type: none"> • Halton Region • Ontario Early Years Centres in Halton
Nutrition	<ul style="list-style-type: none"> • Eat Right Ontario Can provide information regarding local dietitians • Halton Healthy Eating Network
Cognitive/Motor Self-Help Skills	<ul style="list-style-type: none"> • Halton Region Children's Developmental Services
Motor/Autism	<ul style="list-style-type: none"> • ErinoakKids
Preschool Speech and Language	<ul style="list-style-type: none"> • ErinoakKids
Hearing	<ul style="list-style-type: none"> • ErinoakKids Infant Hearing and Screening Services • Halton Health Care, Milton
Vision	<ul style="list-style-type: none"> • ErinoakKids Blind Low Vision Program Services

CONTACT INFORMATION

Eat Right Ontario
1-877-510-5102
www.eatrightontario.ca

ErinoakKids
T: 1-877-374-6625
F: 905-855-9451

Halton Health Care, Milton
T: 905-876-7022
F: 905-876-7005

Halton Healthy Eating Network
Dial 311

Halton Region
Dial 311
F: 905-825-8821

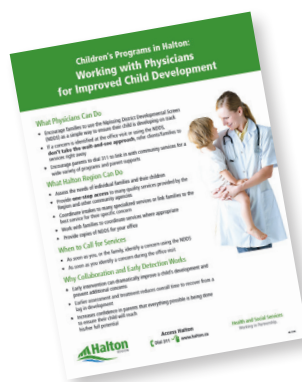
Halton Region
Children's Developmental Services dial ext. 2586

Ontario Early Years Centres in Halton

- Oakville Parent-Child Centre: 905-849-6366
- Burlington-ROCK (Reach Out Centre for Kids): 905-632-9377
- North Halton OEYC Milton Community Resource Centre 905-876-1244
OEYC Satellite: Links2Care 905-873-2960

Our Kids Network
Resources for professionals and families
info@ourkidsnetwork.ca
www.ourkidsnetwork.ca

ROCK (Reach Out Centre for Kids)
905-634-2347



For additional services and programs for children in Halton, please refer to your copy of *Working with Physicians for Improved Child Development*.