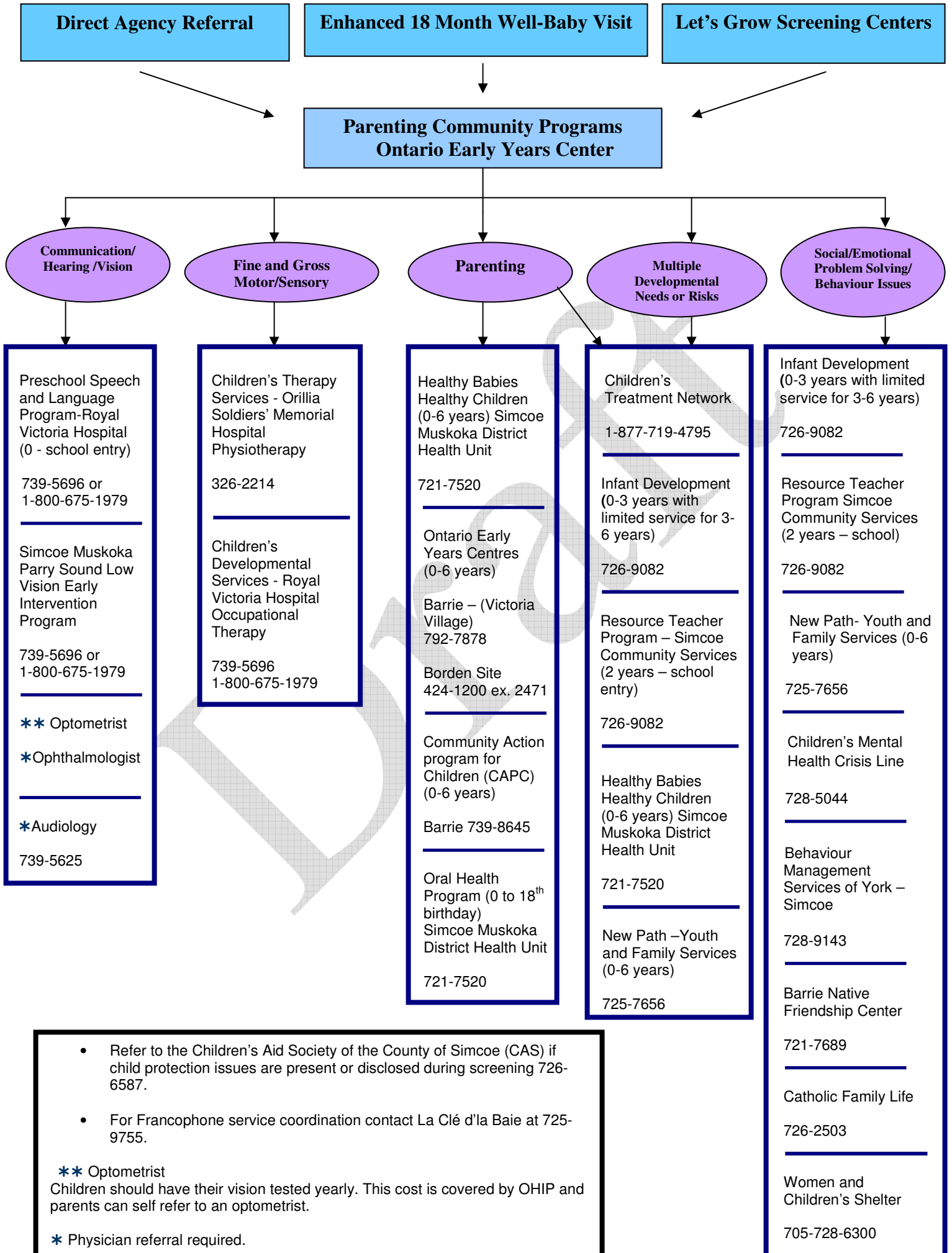


Early Intervention Services Referral Information/ Barrie



- Refer to the Children's Aid Society of the County of Simcoe (CAS) if child protection issues are present or disclosed during screening 726-6587.
- For Francophone service coordination contact La Clé d'la Baie at 725-9755.

**** Optometrist**
Children should have their vision tested yearly. This cost is covered by OHIP and parents can self refer to an optometrist.

*** Physician referral required.**

Early Intervention Services Referral/Barrie

AGENCY/SERVICE	DESCRIPTION OF SERVICE
Audiology	Hearing assessment (all ages) Physician referral required.
Behaviour Management Services of York-Simcoe	Provides behavioural service to individuals who have a developmental disability with a significant cognitive delay.
Barrie Native Friendship Centre	Programming meets the needs of families in the community through culturally based programs designed to bring parents and their children together. Develop and enhance healthy social skills, motor skills and cognitive development. Address the physical, mental, emotional and spiritual well being of individuals, families and communities.
Catholic Family Life Services	Counseling for individuals, couples and families for marital issues, child management concerns, family breakdown, stress, fees geared to income
Children's Aid Society	Investigation of child welfare concerns or risk of concerns, protection, 0 - 16 yrs
Children's Mental Health Crisis Line	Children and their parents, immediate telephone response to deescalate crisis, may visit to site of crisis and/or provide follow up services
Children's Developmental Services Royal Victoria Hospital Occupational Therapy	Infants and preschoolers with developmental concerns and/or at risk populations. Assessment, treatment and consultation. Specialized clinics, public awareness, prevention and early identification activities.
Children's Treatment Network	Serving Simcoe County and York Region for children from birth to age 19 with multiple disabilities *links health care, education, recreation, social and community services through one point of contact for a single coordinated plan of care
Children's Therapy Services Orillia Soldier's Memorial Hospital Occupational Therapy, Physiotherapy	Infants and preschoolers with developmental concerns and/or at risk populations. Assessment, treatment and consultation. Specialized clinics, public awareness, prevention and early identification activities.
Community Care Access Centre for Simcoe County (CCAC)	Infants and children who are medically fragile; assessment/therapy, (dietician, ot, pt, s/l), social work, case management services (coordination and referral), medical referral
Community Action Program for Children (CAPC)	0-6 years. Teen /young parent support. Low income families. Food and Nutrition supports. Variety of free programs and supports for parents and their children.
Oral Health Program Simcoe Muskoka District Health Unit	Urgent dental concerns for children 0 to 18 th birthday years can be addressed through the Oral Health Program, if parents do not have dental insurance coverage and cannot afford care. Intake line to all health unit services.
Healthy Babies Healthy Children Program Simcoe Muskoka District Health Unit	Home visits with a Public Health Nurse and possibly a Family Visitor for families with children ages 0 – 6 years, for parenting support, service coordination, and linking to community resources. Intake line to all health unit services.
Health Connection Simcoe Muskoka District Health Unit	Health information, support and referrals to community resources from a Public Health Nurse. Information also available via internet and e-mail at www.simcoehealth.org Intake line to all health unit services.
Infant Development Simcoe Community Services	0-3 years with limited service for 3-6, home visiting, developmental assessment, service coordination
New Path - Youth and Family Services	0-6 years. Social-emotional and/or behavioural concerns. In-home service provided to parents and children. Parenting programs and social skills group programs for children.
Ontario Early Years Centre	Provide parents with information, education & resources to support them in their parenting role Offer a variety of age appropriate learning opportunities for children 0-6 All programs provided are free
Preschool Speech and Language Program Royal Victoria Hospital	Infants and preschoolers with developmental concerns &/or at risk populations. Assessment, treatment and consultation. Specialized clinics; public awareness, prevention, early identification and education activities.
Resource Teacher Program Simcoe Community Services	2 years to school entry; developmental concerns/behaviour/at risk. Support to children in inclusive preschool programs. Individual work with parent(s) and children. Service coordination
Optometrist	Recommended children should have their vision checked yearly. The cost is covered by OHIP and parents can self refer.
Simcoe Muskoka Parry Sound Low Vision Early Intervention Program	Program provides assessment and intervention services through and Early Childhood Vision Consultant for infants and preschool children who are Blind or Low Vision as diagnosed by an ophthalmologist. Both Child and Family Intervention Services and Childcare Consultation is available.
Women and Children's Shelter	Emergency residence with approximately 27 beds for women and their children who are experiencing abuse in their significant relationships * services include safe, temporary accommodation, crisis telephone counselling, on site counselling, children's services for residents, information and referral, education, advocacy, outreach services, including legal support and advocacy, counselling, groups, and assistance with social services including Ontario Works, Ontario Disability Program, and social housing * a nonprofit, registered charitable organization. Shelter: 705-728-6300 * Outreach Services: 705-721-9977 Crisis 1-800-461-1716